



AUTOMOTIVE

VISION SERIES



MATERIAL HANDLING AND FORKLIFT VEHICLES

Smart Technology Empowered ADAS

Our ADAS is designed and developed to address the safety operations within the sectors of Military vehicles, Specialty vehicles, Urban Transportation vehicles, Airport Ground vehicles, Logistics vehicles, Material Handling and Construction vehicles. Our ADAS solution are designed to

- (1) Be driver centric to enhance user experience
- (2) Increase driver awareness to road situations to save lives and reduce the cost of ownership
- (3) Educate drivers on safe driving to create safer roads

Our bespoke solutions are scalable to meet the most challenging environment addressing Vulnerable Road Users (VRUs) [E.g. Pedestrians, Cyclists, Motorists and Vehicles].

Our full suite of ADAS comprise of Automotive Vision (AMV) series with 360 Cameras providing a ONE STOP solution as follows:

- 1 Forward Collision Warning
- 2 Lane Departure Warning
- 3 Blindspot Detection Warning on VRUs
- 4 Driver Safety Module to monitor driver's fatigue and safety breaches. Customisation can also be done depending on customer requirement.
- 5 Recording of near miss and accidents
- 6 Lidar to improve detection against adverse weather environment and terrain



We also provide Fleet Management System (FMS) to allow customers to manage their Fleet operations. Together with our AMV ONE STOP solution and FMS, customers are able to mitigate accident risks, improve reputation and mitigate any direct and indirect costs resulting from any accidents.

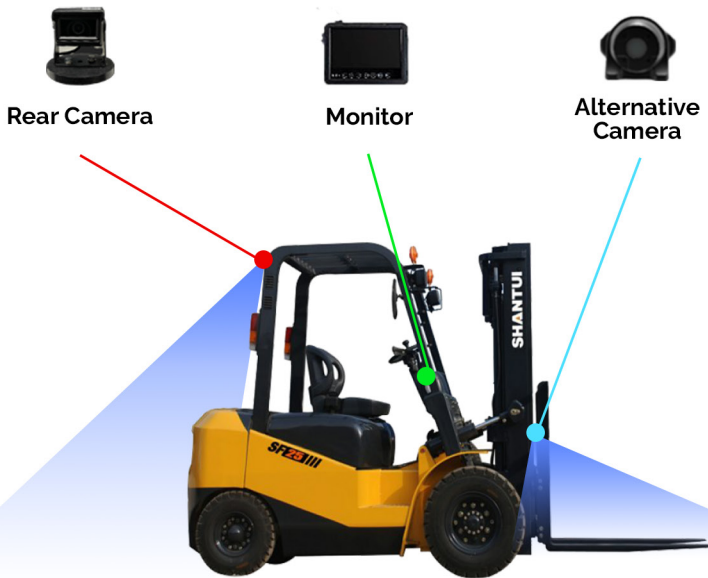


Main Features of AMV for Material Handling and Construction Vehicles

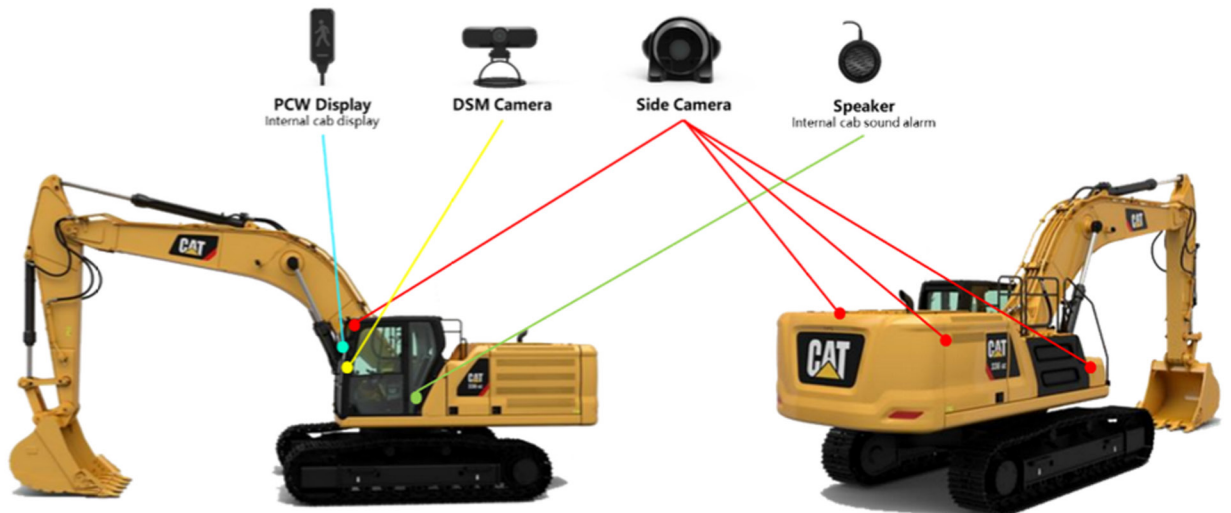
Our solution is customisable and configurable based on the different variants of vehicle type. We can scale up our solution based on our customers' requirement in the area of camera configurations, detection zones and alert strategies



Forklift Solution



Construction Vehicles Solution



Baseline Tech Spec for Material Handling and Construction Vehicles

(Configurable depending on variants)



FOV-10° to 190° cameras



Processor



2 Way Speaker

Processor

IP67 water resistance standards
 Three AHD camera-in ports for front and rear people detection and driver monitoring
 Wi-Fi, BT, and GPS wireless connectivity
 Micro SD card sl
 9~36V DC-in with ACC/IGN support

Two FOV-10° to 190° cameras @720p for front and rear people detection

Ruggedized design meeting IP67 water resistance standards
 Mounting bracket and 2 x M5 screws
 Can be attached with a strong magnet and adhesive tape or drilled
 FOV dependant on variants and blindspot

One FOV-10° to 190° camera @720p for DMS

Ruggedized design meeting IP67 water resistance standards
 Mounting bracket and 2 x M5 screws
 Can be attached with a strong magnet and 3M tape or drilled

2 Way Speaker

Wi-Fi/BT and GPS antenna module
 ACC bullet plug to 2 x Standard, 2 x Micro, 2 x Low-Profile and 2 x Mini blade fuse holder cable and fuses
 Power, ACC/IGN & ground cable
 I/O connector covers for 4G antenna, DIO 1 & 2, CAN Bus, and CVBS connectors

Contact Us